

**Quasi-soliton scattering in quantum spin chains**R. Vlijm,<sup>1,\*</sup> M. Ganahl,<sup>2</sup> D. Fioretto,<sup>1,3</sup> M. Brockmann,<sup>1,4</sup> M. Haque,<sup>4</sup> H. G. Evertz,<sup>5</sup> and J.-S. Caux<sup>1</sup><sup>1</sup>*Institute for Theoretical Physics, University of Amsterdam, Science Park 904, 1098 XH Amsterdam, The Netherlands*<sup>2</sup>*Perimeter Institute for Theoretical Physics, 31 Caroline Street North, Ontario, Canada N2L 2Y5*<sup>3</sup>*Institut für Theoretische Physik, Friedrich-Hund-Platz 1, 37077 Göttingen, Germany*<sup>4</sup>*Max-Planck-Institut für Physik komplexer Systeme, Nöthnitzer Straße 38, 01187 Dresden, Germany*<sup>5</sup>*Institut für Theoretische Physik, Technische Universität Graz, Petersgasse 16, 8010 Graz, Austria*

(Received 13 August 2015; published 18 December 2015)

The quantum scattering of magnon bound states in the anisotropic Heisenberg spin chain is shown to display features similar to the scattering of solitons in classical exactly solvable models. Localized colliding Gaussian wave packets of bound magnons are constructed from string solutions of the Bethe equations and subsequently evolved in time, relying on an algebraic Bethe ansatz based framework for the computation of local expectation values in real space-time. The local magnetization profile shows the trajectories of colliding wave packets of bound magnons, which obtain a spatial displacement upon scattering. Analytic predictions on the displacements for various values of anisotropy and string lengths are derived from scattering theory and Bethe ansatz phase shifts, matching time-evolution fits on the displacements. The time-evolved block decimation algorithm allows for the study of scattering displacements from spin-block states, showing similar scattering displacement features.

DOI: [10.1103/PhysRevB.92.214427](https://doi.org/10.1103/PhysRevB.92.214427)

PACS number(s): 75.10.Jm, 02.30.Ik

**I. INTRODUCTION**

The study of classical dynamics in nonlinear media has proven to be a source of astonishing surprises over the last century. Two observations, both based on numerical simulations, have challenged prejudices and fundamentally altered traditional ways of thinking. First, the famous observation of Fermi, Pasta, Ulam, and Tsingou [1] of a simple nonlinearly coupled set of oscillators showing nontrivial recurrences has shattered the long-held assumption that all nonlinear dynamical systems ergodically explore their full phase space. Second, the pioneering numerical analysis of Zabusky and Kruskal [2] on the Korteweg–de Vries equation [3] demonstrated that this equation supports excitations, which they coined “solitons,” displaying a number of surprising fundamental features. The solitons are localized in space, with a form remaining stable under time evolution which sees them moving uniformly at a speed linearly proportional to their amplitude. Additionally, the astounding characteristic was observed of solitons emerging intact from mutual scattering processes, during which they simply “pass through” one another without losing their identity [2], the only effect of the collision being a relative spatial displacement as compared to their free propagation. The proper understanding of solitons in nonlinear media ultimately led to the development of the classical inverse scattering method [4,5], which is the overarching framework for classical integrable models.

Nonlinear classical systems find their quantum mechanical analog in the shape of interacting many-body systems. In parallel to the classical case, some quantum models have

been shown to be special, in the sense of being exactly solvable using the quantum version of the inverse scattering method [6] (one might also say integrable, although the quantum notion of integrability is not as well defined as its classical counterpart [7]). Fundamental representatives of this family are the Heisenberg spin chain, solved by Bethe using what is now known as the Bethe ansatz [8], along with the Lieb-Liniger model of  $\delta$ -interacting bosons on a line [9]. For the latter, particlelike excitations called Lieb type I modes [10] exist due to the interparticle repulsion, along with type II holelike excitations visualized as holes in an effective Fermi sea. It is possible to distinguish the presence of type I and II modes in correlated bosonic gases in optical lattices using Bragg spectroscopy [11,12]. Quantum magnets such as the Heisenberg spin chain similarly carry particlelike magnon modes when the magnetization is close to saturation. In the limit of small magnetization, holelike modes again appear, which in zero field are known as spinons [13]. Their dynamics can be experimentally observed using inelastic neutron scattering [14,15]. The Heisenberg chain supports distinct bound states of magnons, whose dynamics has been investigated theoretically [16] and has recently been observed experimentally [17].

One could view such excitations as the quantum equivalents of classical solitons. This equivalence is, however, only partial: on the one hand, these quantum mechanical modes represent exact eigenstates and are stable under time evolution; on the other hand, being exact eigenstates of translationally invariant systems, they are not spatially localized. That said, as is usually the case in quantum mechanics, it is possible to adopt a “complementary” picture and create spatially localized excitations by forming wave packets of fundamental excitations by linearly combining states over a range of differing momenta. Locality, however, comes at a price: the wave packet, mixing together states at different energies, will disperse and is thus not stable over long time scales, unlike its classical counterpart. We use the term quasi-soliton for such a wave-packet construction, an example of which was recently

\*R.P.Vlijm@uva.nl

Published by the American Physical Society under the terms of the [Creative Commons Attribution 3.0 License](https://creativecommons.org/licenses/by/3.0/). Further distribution of this work must maintain attribution to the author(s) and the published article's title, journal citation, and DOI.

studied in the context of the Lieb-Liniger model [18], while their mutual scattering has been studied in quantum spin chains [19,20].

The spectroscopic methods traditionally employed to experimentally study condensed-matter systems typically provide momentum- and energy-resolved measurements. However, current experimental developments provide motivation to obtain a better theoretical understanding of spatially localized dynamics. Time-resolved experiments are now able to track quantum many-body systems at time scales smaller than relaxation time scales, particularly in experiments with ultracold atoms [17,21,22], but also in NMR setups [23] and potentially in pump-probe spectroscopy experiments [24]. As a result, nondissipative dynamics of many-body systems out of equilibrium is now a rapidly growing field of experimental as well as theoretical investigation [25]. Novel cold-atom experimental techniques for spatially resolved manipulation and observation at the single-site level [17,22,26] have opened the door to explicit high-resolution tracking of spatial propagation phenomena. Moreover, an experiment with interacting bosonic atoms has highlighted the interaction-induced longevity of repulsive pairs [27]. This has motivated increased theoretical attention to the (anti)binding of localized excitations and interactions of these bound clusters, both in itinerant systems [19,28] and in spin chains [16,19,20,29]. Very recently, the spatial dynamics of itinerant clusters has been studied in experiment [30]. Propagation of quantum solitons in Bose-Hubbard chains has also been studied numerically [31].

In Ref. [19], the scattering of a magnon wave packet on approximate bound eigenstates of  $n$  particles was studied numerically in the Heisenberg chain. In this work, we present an algebraic framework and exact calculations based on Bethe ansatz. We therefore consider quantum scattering of localized excitations over a ferromagnetic background in the Bethe ansatz solvable anisotropic spin- $\frac{1}{2}$  Heisenberg chain (XXZ model) [8,32,33]

$$H = J \sum_{j=1}^N \left[ S_j^x S_{j+1}^x + S_j^y S_{j+1}^y + \Delta \left( S_j^z S_{j+1}^z - \frac{1}{4} \right) \right]. \quad (1)$$

The XXZ model is experimentally realizable, for example, in the setups of Refs. [17,22], which use two hyperfine states of bosonic atoms in the Mott phase to experimentally realize the spin-up and spin-down states. The effective model is a nearly isotropic ( $\Delta \approx 1$ ) Heisenberg chain, while an experimental setup with variable anisotropy  $\Delta$  is under development [34]. In addition, the XXZ model has been shown to describe Josephson junction arrays of the flux qubit type [35], and may also be realizable in optical lattices [36] or with polaritons in coupled arrays of cavities [37]. It is conceivable that these or similar experimental setups may provide time-resolved observations of propagating and interacting localized excitations.

The parameter  $J$  in Hamiltonian (1) is given by the exchange interaction of two neighboring electrons or, in the aforementioned experimental setup, by the exchange interaction between two neighboring bosons in an optical lattice at unit filling. Its sign does not matter for our purposes here [19,38,39]; for definiteness, we set it to  $J > 0$ . We distinguish two regions for the anisotropy parameter  $\Delta$ , namely, the planar  $xy$  ( $|\Delta| < 1$ ) or axial  $z$  ( $|\Delta| > 1$ ) cases.

Due to the interaction term ( $\propto \Delta$ ), the XXZ chain displays a whole zoology of fundamental excitations: isolated down spins can form spatially bound states (as was understood by Bethe already in his original publication [8]), whose bond size decreases as  $\Delta$  increases. These excitations are often referred to as “string states,” as the rapidities describing Bethe states containing such bound multimagnons appear as approximately equally spaced vertical strings in the complex plane (the precise set of available bound states depends on the value of  $\Delta$ ; at the isotropic point  $\Delta = 1$  and in the axial regime, all string lengths are allowed).

We construct spatially localized wave packets of  $n$  bound magnons using linear combinations of these string states of length  $n$  with Gaussian-distributed momenta. We call them “ $n$ -string wave packets.” We further demonstrate that exact methods based on the algebraic Bethe ansatz [6] provide a framework to evaluate the time-dependent expectation value of the local magnetization  $\langle S_j^z(t) \rangle$  algebraically, which can be used to track those localized magnonlike wave packets. We investigate their stability and mutual scattering using a combination of scattering theory, Bethe ansatz, and numerically exact calculations.

At large anisotropy  $\Delta \gg 1$ , magnon bound states resemble having downturned spins on neighboring sites. An  $n$ -string wave packet is thus closely approximated by a consecutive block of  $n$  downturned spins. While this correspondence breaks down at smaller  $\Delta$ , this provides motivation to study the evolution of states with downturned spins on a consecutive block of sites. In addition, this is exactly the type of initial state prepared in experiments [17,22]. Scattering of such blocks has been explored in Ref. [19], where a spatial displacement of two sites was observed for the block at several  $\Delta$ , and explained at large  $\Delta$  in terms of energy conservation. In this work, we connect scattering phase shifts with trajectory displacements in order to provide a Bethe ansatz derivation of the observed displacements.

The paper is organized as follows. In Sec. II, we will introduce the concepts of string solutions and the scattering phase shifts associated with  $n$ -strings, along with details on the algebraic Bethe ansatz [6] based evaluation of the time-dependent expectation value of the local magnetization  $\langle S_j^z(t) \rangle$ , which can be used to track localized magnonlike excitations of the spin chain. In Sec. III, we elaborate on the construction, stability and time evolution of scattering of  $n$ -string wave packets. We also compare with the stability of consecutive-site spin blocks. In Sec. IV, we consider the scattering trajectory displacements, derive analytical results for them, and compare with numerical measurements. The  $\Delta \rightarrow \infty$  limit is treated analytically, comparing with numerical data for spin-block initial states. The appendixes provide details involving scattering theory and details on obtaining the phase shift directly from the phase of the time-evolving wave function.

## II. TIME EVOLUTION FROM BETHE ANSATZ

In this section, we present the basic formulas of the Bethe ansatz for the spin- $\frac{1}{2}$  XXZ model and explain the concept of string solutions and the scattering phase shift associated with

$n$ -strings. In Sec. II C, expressions are given for the time-evolved expectation value of the local magnetization by using results from algebraic Bethe ansatz. The method used here relies on the availability of determinant expressions for matrix elements between Bethe states [40–42]. This last subsection is relatively technical and could be skipped on first reading.

### A. Coordinate Bethe ansatz for the XXZ model

The eigenstates of the XXZ spin chain (1) can be constructed via the Bethe ansatz [8,33] and have the form

$$|{\lambda}\rangle = \sum_{j_1 < \dots < j_M} \sum_Q A_Q({\lambda}) \prod_{a=1}^M e^{i j_a p(\lambda_{Q_a})} S_{j_a}^- |\uparrow \uparrow \dots \uparrow\rangle, \quad (2)$$

where  $M$  denotes the number of downturned spins and therefore fixes the magnetization. The sum over  $Q$  is a sum over all permutations of  $M$  objects and the amplitudes  $A_Q$  are related to the scattering phases. The set of  $M$  complex rapidities  $\{\lambda\} \equiv \{\lambda_j\}_{j=1}^M$  completely determines the Bethe state and is simply related to the physical energy and momentum. By imposing periodic boundary conditions, i.e.,  $S_{N+1}^\alpha = S_1^\alpha$  for  $\alpha = x, y, z$  in the Hamiltonian (1), each set of rapidities  $\{\lambda\}$  corresponding to an  $M$ -magnon eigenstate must obey Bethe equations

$$\left( \frac{\phi_1(\lambda_j)}{\phi_{-1}(\lambda_j)} \right)^N = \prod_{\substack{k=1 \\ k \neq j}}^M \frac{\phi_2(\lambda_j - \lambda_k)}{\phi_{-2}(\lambda_j - \lambda_k)}. \quad (3)$$

The different definitions of  $\phi_n(\lambda)$ ,  $\theta_n(\lambda)$ , and  $\zeta$  for various regions in anisotropy  $\Delta$  are given in Table I, while the relation  $\phi_{-n}(\lambda)/\phi_n(\lambda) = -e^{i\theta_n(\lambda)}$  holds as well. Within the Bethe ansatz, the momenta of single downturned spins can be parametrized in terms of rapidities

$$p(\lambda) = -i \ln \left[ \frac{\phi_1(\lambda)}{\phi_{-1}(\lambda)} \right] = \pi - \theta_1(\lambda). \quad (4)$$

By invoking Schrödinger's equation  $H|{\lambda}\rangle = E|{\lambda}\rangle$  for a Bethe state consisting of a single downturned spin, the magnon dispersion relation

$$E(p) = J[\cos(p) - \Delta] \quad (5)$$

is easily derived. In the case of just two single magnons, their scattering phase shift  $\chi^{(1,1)}(p_1, p_2)$  can be obtained from the permutation of two magnons in the Schrödinger equation

$$\frac{A_{Q'}}{A_Q} = -\frac{1 + e^{i(p_1+p_2)} - 2\Delta e^{ip_2}}{1 + e^{i(p_1+p_2)} - 2\Delta e^{ip_1}} = -e^{i\chi^{(1,1)}}, \quad (6)$$

TABLE I. Definitions of functions appearing in Bethe ansatz for different regions in anisotropy  $\Delta$ .

	$\zeta$	$\phi_n(\lambda)$	$\theta_n(\lambda)$
$ \Delta  < 1$	$\text{acos}(\Delta)$	$\sinh(\lambda + \frac{i n \zeta}{2})$	$2 \text{atan}(\frac{\tanh(\lambda)}{\tan(\frac{n \zeta}{2})})$
$\Delta = 1$		$\lambda + \frac{i n}{2}$	$2 \text{atan}(\frac{2\lambda}{n})$
$\Delta > 1$	$\text{acosh}(\Delta)$	$\sin(\lambda + \frac{i n \zeta}{2})$	$2 \text{atan}(\frac{\tanh(\lambda)}{\tanh(\frac{n \zeta}{2})})$

where  $Q$  is the identity and  $Q'$  interchanges the two indices 1 and 2. Furthermore, the magnon momenta  $p_1 = p(\lambda_1)$  and  $p_2 = p(\lambda_2)$  as well as the scattering phase shift  $\chi^{(1,1)} = \theta_2(\lambda_1 - \lambda_2) = \pi - i \ln[\phi_{-2}(\lambda_1 - \lambda_2)/\phi_2(\lambda_1 - \lambda_2)]$  are parametrized by the two rapidities  $\lambda_1$  and  $\lambda_2$ .

Note that in the general context of two-particle scattering (see Appendixes A and B) the scattering phase shift is denoted by  $\chi$ , while it is denoted by  $\chi^{(m,n)}$  (see, e.g., Sec. IV A) when scattering of  $m$ - and  $n$ -magnon bound states is considered.

### B. Strings and magnons

The sets of rapidities solving Bethe equations (3) are self-conjugate and arrange themselves in patterns of string solutions

$$\lambda_{j,a}^{(n)} = \lambda_j^{(n)} + \frac{i\zeta}{2}(n+1-2a) + i\frac{\pi}{4}(1-\nu_j) + i\delta_{j,a}^{(n)}, \quad (7)$$

where the string center  $\lambda_j^{(n)} \in \mathbb{R}$  and  $a = 1, \dots, n$  is the internal label of a rapidity within a string of length  $n$  and parity  $\nu_j$ . In the planar regime  $|\Delta| < 1$ , periodicity of the trigonometric functions also allows for string centers to be located on the line  $i\pi/2$ , resulting in negative parity strings ( $\nu_j = -1$ ). A potential analysis of negative parity strings would only start from 5-strings onwards, as negative parity strings of lengths 2, 3, and 4 do not exist [43] for  $0 < \Delta < 1$ . The case of negative  $\Delta$  does contain this type of strings, but can be considered from a similarity transformation of the model at positive  $\Delta$ . Therefore, negative parity strings will be left out of consideration for the analysis of scattering magnons, restricting to  $\nu_j = 1$  and positive  $\Delta$ .

At finite size, solutions are not exactly given by strings, but rather contain string deformations  $\delta_{j,a}^{(n)} \in \mathbb{C}$ , under the constraint that the full set of rapidities  $\{\lambda\}$  remains self-conjugate. In the cases considered here, the deviations are exponentially small in system size and it is therefore sufficient to take the limit of vanishing deviations. In this limit, the product of the Bethe equations of all rapidities within a string reduces to the Bethe-Gaudin-Takahashi equations [44], which are similar to the Bethe equations but given in terms of the  $n$ -string centers  $\lambda_j^{(n)}$ . In logarithmic form, they read as

$$\theta_n(\lambda_j^{(n)}) - \frac{1}{N} \sum_m \sum_{k=1}^{M_m} \Theta_{nm}(\lambda_j^{(n)} - \lambda_k^{(m)}) = \frac{2\pi}{N} I_j^{(n)}, \quad (8)$$

$$j = 1, \dots, M_n$$

where  $M_n$  denotes the number of  $n$ -strings present, satisfying  $\sum_n n M_n = M$ . The logarithmic scattering kernels  $\theta_n(\lambda)$  are defined in Table I and the scattering phase shift between two individual strings of arbitrary length is given by (for  $|\Delta| < 1$  we consider only strings with positive parity)

$$\Theta_{nm}(\lambda) = (1 - \delta_{nm})\theta_{|n-m|}(\lambda) + 2\theta_{|n-m|+2}(\lambda) + \dots + 2\theta_{n+m-2}(\lambda) + \theta_{n+m}(\lambda). \quad (9)$$

The logarithmic form of the Bethe-Gaudin-Takahashi equations allows for the introduction of string quantum numbers  $I_j^{(n)}$ , obeying an exclusion principle for all Bethe states, meaning that every Bethe state is characterized by a unique set of string quantum numbers. By considering the limit of

sending a string center to infinity, the maximum allowed string quantum number can be derived. These limiting quantum numbers define the dimensions of subsectors of the Hilbert space containing a specific string content.

Moreover, in the planar case  $|\Delta| < 1$ , the existence of strings with a specific length  $n$  in the spectrum is determined by the anisotropy [44]. Therefore, restrictions on the availability of  $n$ -string wave packets as well as on their momenta [45] are present in the planar case  $|\Delta| < 1$ , depending on the value of  $\Delta$ .

We get all Bethe states with the desired string content by solving the Bethe-Gaudin-Takahashi equations (8) using an iterative algorithm for all combinations of allowed string quantum numbers. After obtaining the rapidities, the energy of a Bethe state containing strings is easily computed as

$$E_{\{\lambda\}} = -\frac{J}{2} |\phi_2(0)| \sum_n \sum_{j=1}^{M_n} \theta'_n(\lambda_j^{(n)}), \quad (10)$$

where  $\theta'_n$  is the derivative of  $\theta_n$ . The energy contribution  $E^{(n)}(p)$  of a string of length  $n$  to the energy  $E_{\{\lambda\}}$  is

$$E^{(n)}(p) = J \frac{\phi_2(0)}{\phi_{2n}(0)} [\cos(p) - \epsilon_n], \quad (11)$$

where  $\epsilon_n = \cos(n\zeta), 1, \cosh(n\zeta)$  for  $|\Delta| < 1, \Delta = 1$ , and  $\Delta > 1$ , respectively. The momentum  $p = p^{(n)}(\lambda)$  of an  $n$ -string with string center  $\lambda$  is given by

$$p^{(n)}(\lambda) = \pi - \theta_n(\lambda). \quad (12)$$

In the following, we use the convention  $-\pi < p^{(n)} \leq \pi$ . Equations (11) and (12) are only the correct formulas for energy and momentum of a string if the thermodynamic limit is taken while keeping the number  $M$  of rapidities finite (i.e., zero density). The dressing of energies and momenta can then be neglected. For the finite-size calculations performed later in Secs. IV and III, we use Eq. (10) for the energy valid for any finite size, including the dressing of energies. Note further that for a single  $n$ -string the minimum of the energy dispersion is always at  $\lambda^{(n)} = 0$ , i.e., at momentum  $p^{(n)} = \pi$ . The total momentum of a Bethe state can be extracted from its string quantum numbers

$$P_{\{\lambda\}} = \sum_n M_n \pi - \frac{2\pi}{N} \sum_{n,j} I_j^{(n)} \pmod{2\pi}. \quad (13)$$

In the thermodynamic limit and for a finite number  $M$  of rapidities, each separate bound magnon represented by a string quantum number  $I_j^{(n)}$  can be associated to a single-particle momentum  $p_j^{(n)}$ :

$$p_j^{(n)} = p^{(n)}(\lambda_j^{(n)}) = \pi - \frac{2\pi}{N} I_j^{(n)}. \quad (14)$$

In the construction of the initial states in the finite-size calculations of the following sections, we use Eq. (14) to identify the asymptotic momenta, i.e., the momenta of the wave packets when they are well separated in space. This identification is exact if the wave packets are infinitely distant. For a finite but large distance, small dressing effects do play a role, but we can neglect them in our analysis.

To summarize, the rapidities belonging to each eigenstate are obtained by iteratively solving the Bethe-Gaudin-Takahashi equations (8). They can be used to evaluate the determinant expressions (18) for the normalized matrix elements of the following section.

### C. Magnetization expectation value

Time evolution of the expectation value of the local magnetization  $\langle S_j^z(t) \rangle$  is performed by making use of the algebraic Bethe ansatz [6]. The time-dependent wave function is computed using unitary time evolution in a basis of Bethe states  $|\{\lambda\}\rangle$ ,

$$|\Psi(t)\rangle = e^{-iHt} |\Psi(0)\rangle = \sum_{\{\lambda\}} e^{-iE_{\{\lambda\}}t} C_{\{\lambda\}} |\{\lambda\}\rangle, \quad (15)$$

where the coefficients  $C_{\{\lambda\}} = \langle \{\lambda\} | \Psi(0) \rangle$  are determined by the initial state  $|\Psi(0)\rangle$ , which is given in Sec. III, Eq. (23), for the construction of  $n$ -string wave packets.

The expectation value of the local magnetization at site  $j$  is given by

$$\langle S_j^z(t) \rangle = \sum_{\{\lambda\}, \{\mu\}} e^{-i(E_{\{\lambda\}} - E_{\{\mu\}})t} C_{\{\lambda\}} C_{\{\mu\}}^* \langle \{\mu\} | S_j^z | \{\lambda\} \rangle. \quad (16)$$

As the states  $|\{\lambda\}\rangle, |\{\mu\}\rangle$  are Bethe states determined, respectively, by sets of rapidities  $\{\lambda_j\}_{j=1}^M, \{\mu_j\}_{j=1}^M$  that obey Bethe equations (3) (here we have  $M$  rapidities in both sets since the operator  $S_j^z$  does not change the magnetization), the matrix elements are given by the normalized expressions obtained from algebraic Bethe ansatz

$$\langle \{\mu\} | S_j^z | \{\lambda\} \rangle = \frac{F_j^z(\{\mu\}, \{\lambda\})}{\sqrt{\mathcal{N}(\{\mu\})\mathcal{N}(\{\lambda\})}}. \quad (17)$$

Here, we make use of the determinant expressions obtained in Ref. [42]:

$$F_j^z(\{\mu\}, \{\lambda\}) = \frac{\varphi_{j-1}(\{\mu\})}{\varphi_{j-1}(\{\lambda\})} \prod_{k=1}^M \frac{\phi_1(\mu_k)}{\phi_1(\lambda_k)} \times \frac{\det[H(\{\mu\}, \{\lambda\}) - 2P(\{\mu\}, \{\lambda\})]}{\prod_{k,l=1}^M \phi_0(\mu_k - \mu_l) \phi_0(\lambda_l - \lambda_k)}, \quad (18)$$

with  $\varphi_j(\{\lambda\}) = e^{-iP_{\{\lambda\}}j}$  and  $\phi_n(\lambda)$  defined in Table I. The entries of the matrices  $H(\{\mu\}, \{\lambda\})$  and  $P(\{\mu\}, \{\lambda\})$  are given by

$$H_{ab}(\{\mu\}, \{\lambda\}) = \frac{\phi_2(0)}{\phi_0(\mu_a - \lambda_b)} \left\{ \prod_{\substack{k=1 \\ k \neq a}}^M \phi_2(\mu_k - \lambda_b) - \left[ \frac{\phi_{-1}(\lambda_b)}{\phi_1(\lambda_b)} \right]^N \prod_{\substack{k=1 \\ k \neq a}}^M \phi_{-2}(\mu_k - \lambda_b) \right\}, \quad (19)$$

$$P_{ab}(\{\mu\}, \{\lambda\}) = \frac{\phi_2(0)}{\phi_{-1}(\mu_a) \phi_1(\mu_a)} \prod_{k=1}^M \phi_2(\lambda_k - \lambda_b). \quad (20)$$

The normalization  $\mathcal{N}(\{\lambda\})$  is computed from the Gaudin determinant [46,47]

$$\mathcal{N}(\{\lambda\}) = [\phi_2(0)]^M \prod_{\substack{k,l=1 \\ k \neq l}}^M \frac{\phi_2(\lambda_k - \lambda_l)}{\phi_0(\lambda_k - \lambda_l)} \det \Phi(\{\lambda\}), \quad (21)$$

where the Gaudin matrix is given by the Jacobian of the Bethe equations

$$\Phi_{ab}(\{\lambda\}) = \delta_{ab} \left[ N\theta'_1(\lambda_a) - \sum_{k=1}^M \theta'_2(\lambda_a - \lambda_k) \right] + \theta'_2(\lambda_a - \lambda_b). \quad (22)$$

The time-dependent expectation value of the local magnetization is then obtained by evaluating the double sum over matrix elements in Eq. (16). By construction, the double sum only includes eigenstates with the same particle content, which is not large for the few-magnon states we will consider. As a result, the double summation is still tractable at lattice sites  $N \sim \mathcal{O}(10^2)$ . In the case of dealing with string solutions for the magnon bound states, reduced determinants for strings described in Ref. [48] must be used.

### III. BOUND MAGNON WAVE PACKETS

The strings described in the previous section do not correspond one to one to localized bound states of downturned spins, but rather are translationally invariant constituents of Bethe eigenstates. In order to create states of  $n$  bound magnons with localized magnetization features, we construct Gaussian wave packets by summing over single  $n$ -string states (labeled by the string center  $\lambda^{(n)}$ ) with momenta distributed around  $\bar{p}$ ,

$$|\Psi(0)\rangle = \mathcal{N}_0 \sum_p e^{-ip\bar{x} - \frac{\alpha^2}{4}(p-\bar{p})^2} |\lambda^{(n)}(p)\rangle, \quad (23)$$

where  $\mathcal{N}_0$  is a normalization constant. Unitary time evolution under Hamiltonian (1) implies an expression of the velocities of the wave packets by expanding the dispersion relation (11) around  $p = \bar{p}$  to first order (see Appendix B):

$$v = \left. \frac{\partial E^{(n)}(p)}{\partial p} \right|_{p=\bar{p}} = -J \frac{\phi_2(0)}{\phi_{2n}(0)} \sin(\bar{p}). \quad (24)$$

The prefactor can be expanded for large anisotropy,

$$\frac{\phi_2(0)}{\phi_{2n}(0)} \simeq (2\Delta)^{-n+1}, \quad (25)$$

implying that wave packets constructed from higher strings have a lower velocity in real space.

In the remainder of this section, we will analyze the stability of  $n$ -string wave packets, along with the stability of another form of a localized multimagnon, a consecutive-site spin block. The two constructions are closely related to each other for large  $\Delta$ . Subsequently, scattering processes of  $n$ -string wave packets are visualized by computing the time evolution of the local magnetization. Furthermore, we describe a method for direct observation of the phase accumulated by the wave function of a finite spin chain during a scattering process.

#### A. Stability of $n$ -string wave packets

The center of the wave packet  $x(t)$  and its width  $\Delta x(t)$  are, respectively, given by the expectation value and the variance of the position operator

$$\hat{x} = \sum_{j=1}^N j \left( \frac{1}{2} - S_j^z \right). \quad (26)$$

In the continuum limit, the sum over all possible  $n$ -string momenta  $p = p^{(n)}$  can be approximated by an integral. For the width of the Gaussian wave packet in real space we obtain

$$\Delta x(t=0) := \sqrt{\langle \Psi(0) | [\hat{x} - x(0)]^2 | \Psi(0) \rangle} \approx \frac{\alpha}{2}. \quad (27)$$

String solutions, being associated with bound states of magnons with exponentially decaying wave functions, will add exponential terms to the shape of the  $n$ -string wave packets in real space. By inserting the complex momenta of the individual constituents of the string solutions to the Bethe wave function, it can be shown that, for example, a 2-string state with momentum  $\pi/2$  contains exponentials in the Bethe wave function reading  $e^{-(x_2-x_1)/\xi}$ , with an effective binding length  $\xi = 2/\ln(2\Delta^2)$ . This average distance between the constituent particles in the string states provides a lower bound to how localized the wave packets constructed out of such string states can be.

For  $\alpha < \xi(\Delta)$ , the wave packet will start to lose its Gaussian shape in real space in favor of a simple exponential decay around the wave-packet center. This issue can be circumvented by choosing large enough Gaussian widths, but will require much higher system sizes. The effective binding length becomes smaller at higher anisotropy, making the problem of the extra exponentially decaying shape to the Gaussian wave-packet construction relevant only at  $|\Delta| \lesssim 1$ .

Induced by the nonlinear dispersion relation of the magnons, the width of a wave packet in real space will furthermore increase in the course of time [see Eq. (A2)]:

$$\Delta x(t) = \sqrt{\frac{\alpha^2}{4} + \frac{\delta_n^2 t^2}{\alpha^2}}, \quad (28)$$

obtained by expanding the dispersion relation [Eq. (11)] to second order around the average momentum, yielding  $\delta_n = \left. \frac{\partial^2 E^{(n)}(p)}{\partial p^2} \right|_{p=\bar{p}}$ . The broadening of  $n$ -string wave packets in real space is therefore described by the initial width  $\alpha$  and

$$\delta_n^2 = J^2 \left( \frac{\phi_2(0)}{\phi_{2n}(0)} \right)^2 \cos^2(\bar{p}). \quad (29)$$

To first order, all strings of arbitrary length are stable at momenta  $\bar{p} = \pm\pi/2$ , but possess a nontrivial dependence on the anisotropy for other momenta. Moreover, the broadening of 1-string wave packets is not influenced by the anisotropy. The anisotropy-dependent factor can again be approximated in the large anisotropy limit given by Eq. (25), showing that the stability of the wave packets increases with increasing anisotropy and string length.

In Fig. 1, the magnetization profile of a diffusing 2-string wave packet with zero group velocity computed from algebraic Bethe ansatz is shown. We used as average momentum  $\bar{p} = \pi$  since the energy dispersion relation has its minimum there.

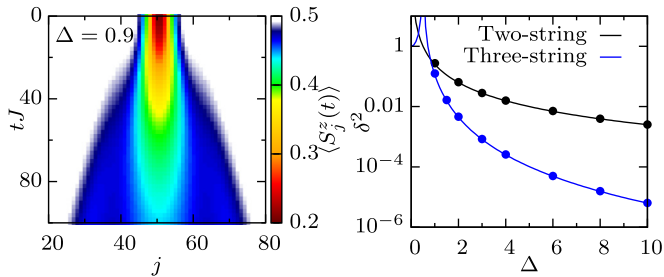


FIG. 1. (Color online) Left: decaying 2-string wave packet with zero group velocity (bound state of two magnons with Gaussian momentum distribution centered with  $\alpha = 4$  around  $\bar{p} = \pi$ , where the energy dispersion has its minimum), in a chain of  $N = 100$  sites, calculated from algebraic Bethe ansatz matrix elements. Right: prefactor  $\delta^2$  of the  $t^2$  dependence of the wave-packet width. Theoretical curve [Eq. (29)] with  $\bar{p} = \pi$  and  $J = 1$ , as a function of  $\Delta$ . The data points are retrieved by fitting  $\delta^2$  from the decaying wave packets from the Bethe ansatz time evolutions.

Furthermore, fitted parameters on the time-dependent wave-packet width are compared to the theoretical values of  $\delta_n^2$  for 2- and 3-strings.

The diverging behavior at low anisotropy of both  $\delta_n^2$  and the effective binding length of strings constrain the applicability of scattering theory results for the planar regime  $|\Delta| < 1$ .

### B. Stability of spin blocks

A similar or even more drastic dispersing behavior can be observed for blocks of  $n$  adjacent sites. Figure 2 shows the time evolution of a block of 20 upturned spins in a ferromagnetic chain of downturned spins for different anisotropy parameters  $\Delta$ . The results shown in Figs. 2 and 6 were obtained using the time-evolving block decimation (TEBD) algorithm [16,19,49].

In the axial regime  $\Delta > 1$ , the initial state mostly projects onto many-magnon bound states, namely  $n$ -strings with  $n \leq 20$ , which for such anisotropy values are tightly bound and thus have a large overlap with the initial spin block. A quantitative analysis of the overlap between the initial spin block and large strings is provided by Refs. [50,51] for a comparable situation involving a prepared domain-wall state containing  $M$  consecutive down spins on a polarized background. The overlaps between the  $M$ -spin block state and a few string configurations are considered, where the normalization saturation becomes entirely dominated by the  $M$ -string states with increasing anisotropy.

Since the spin blocks mostly contain large strings for large anisotropy, they display slow dispersion [see Eq. (11)], meaning that the initial spin block remains more or less intact in time over long time scales. However, as the isotropic point  $\Delta = 1$  is approached, the nature of the overlaps drastically changes. Eigenstates with combinations of smaller strings start carrying a larger fraction of the total overlap with the initial state. Under time evolution, one thus sees space-time propagation lines corresponding to shorter strings, which disperse more rapidly. By the time one has entered the planar regime  $0 < \Delta < 1$ , the initial spin block decomposes into all available string lengths including the most rapidly dispersing 1-string states, leading

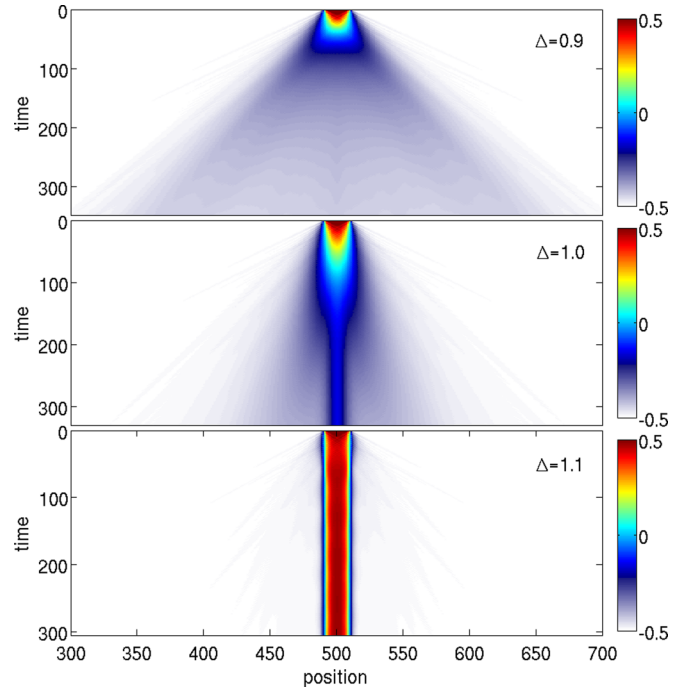


FIG. 2. (Color online) Decay of a block of 20 upturned spins in a chain of  $N = 1000$  sites for different values of anisotropy, computed using TEBD. Around the isotropic point  $\Delta = 1$ , the behavior of the spin block changes drastically, as the spin block becomes less tightly bound and will start to decay into smaller strings.

to a rapid dispersion of the magnetization throughout the “light cone” defined by the maximal group velocity of the 1-strings.

A comparison of Figs. 1 and 2 (both at  $\bar{p} = \pi$ ) shows that spin blocks decay faster than  $n$ -string wave packets of the previous subsection, which has a twofold explanation. First, an  $n$ -string wave packet is a superposition of  $n$ -string Bethe states which have no decay channel into strings of smaller lengths. In contrast, in the superposition of the initial spin block state, all smaller string lengths are allowed and actually present. Second, in the momentum distribution of the spin block, momenta belonging to high velocities are not Gaussian-type suppressed. Therefore, states with high velocities ( $p \approx \pi/2$ ) are more dominant in the spin-block state than in the  $n$ -string wave packet, both with  $\bar{p} = \pi$ . However, the spin-block state and the  $n$ -string wave packets become similar at higher  $\Delta$ , such that the analytic predictions on scattering displacement become applicable to both cases.

### C. Scattering $n$ -string wave packets

The prescattering bound magnon initial states  $|\Psi(0)\rangle$  are composed of two Gaussian wave packets, where the construction relies on allocation of individual momenta to distinct strings within a single Bethe state according to Eq. (14). We localize two Gaussian wave packets labeled by  $j = 1, 2$  with average momenta  $\bar{p}_j$  around two well-separated lattice sites

$$|\Psi(0)\rangle = \mathcal{N}_0 \sum_{p_1, p_2} c_{p_1, p_2} |\lambda^{(n)}(p_1), \lambda^{(m)}(p_2)\rangle, \quad (30)$$

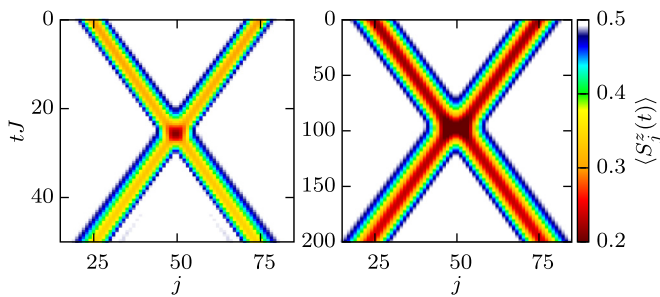


FIG. 3. (Color online) Time evolution of  $\langle S_j^z(t) \rangle$  illustrating scattering  $n$ -string wave packets, computed using algebraic Bethe ansatz, for  $N = 100$ ,  $\Delta = 2$ ,  $\bar{p}_1 = -\bar{p}_2 = -\pi/2$ , and  $\alpha = 4$ . Left: scattering of 1-string wave packets (single magnons). Right: scattering of 2-string wave packets (bound magnons).

where

$$c_{p_1, p_2} = e^{-i(p_1 \bar{x}_1 + p_2 \bar{x}_2) - \frac{\alpha^2}{4}(p_1 - \bar{p}_1)^2 - \frac{\alpha^2}{4}(p_2 - \bar{p}_2)^2}. \quad (31)$$

For simplicity, we label Bethe states here only by the two string centers  $\lambda^{(n)}$  and  $\lambda^{(m)}$  instead of the whole set  $\{\lambda\} \equiv \{\lambda_j\}_{j=1}^{n+m} = \{\lambda_{1,a}^{(n)}\}_{a=1}^n \cup \{\lambda_{2,b}^{(m)}\}_{b=1}^m$ . The two centers are, respectively, uniquely determined by the momenta  $p_1$  and  $p_2$  via Eq. (12). Due to the energy dispersion (11) of the bound magnons, the relative velocity of the wave packets is maximized at  $\bar{p}_1 = -\bar{p}_2 = -\pi/2$ .

Figure 3 shows time-dependent magnetization profiles for scattering of 1- and 2-string wave packets, respectively, computed from the algebraic Bethe ansatz matrix elements described in Sec. II C. A close examination of the profiles shows distinctive features akin to soliton scattering, namely, that the wave packets emerge out of a collision intact, but spatially displaced. This displacement will be quantified in the next section.

#### D. Direct phase shift measurements

The real-time scattering trajectories in this work are analyzed using the idea that the scattering between two localized wave packets is well described by the scattering phase shift corresponding to the average momenta of the two wave packets. This idea can also be verified through direct observation of the phase accumulated by the wave function of a finite chain during a scattering process. We therefore compare the evolution of an interacting chain ( $\Delta \neq 0$ ) with the evolution of a noninteracting chain ( $\Delta = 0$ ), each containing two localized 1-string wave packets. The overlap between the two wave functions

$$\Gamma_\Delta(t) = \langle \Psi^{[0]}(t) | \Psi^{[\Delta]}(t) \rangle \quad (32)$$

gives the phase acquired due to the interaction between the magnons. The value of  $\Delta$  is here indicated in the superscript.

In Appendix C, we show how the phase of the quantity  $\Gamma_\Delta$  after a single scattering event, calculated using numerical exact diagonalization, matches the Bethe ansatz phase shift of Eq. (6), even for wave packets that are spatially well localized. Such overlaps between time-evolved wave functions are currently not directly accessible by Bethe ansatz.

#### IV. SCATTERING DISPLACEMENT

The initial state constructed from Bethe states is prepared as two wave packets of bound states of an arbitrary finite number of magnons with initial average positions and momenta  $(\bar{x}_j, \bar{p}_j)$ . The  $n$ - and  $m$ -string wave packets are constructed separately at large separation, such that their motion before and after scattering can be considered to be free. In particular, the motion of the center of each wave packet is (see Appendix A)

$$x_j(t) = \begin{cases} \bar{x}_j + v_j t & \text{before scattering,} \\ \bar{x}_j + v_j t - \chi_j(\bar{p}_1, \bar{p}_2) & \text{after scattering,} \end{cases} \quad (33)$$

given in units of lattice distance, where the velocity  $v_j$  was defined in Eq. (24). Note that, in the case of single magnon scattering for example, a negative average momentum  $\bar{p}_j$  yields a positive velocity  $v_j$  and vice versa [see Eq. (5) with  $J$  positive].

The displacement  $\chi_j(\bar{p}_1, \bar{p}_2)$  can be obtained by expanding the scattering phase shift around the average momenta [see also Eq. (B11)] and is therefore given as

$$\chi_j(\bar{p}_1, \bar{p}_2) = \left. \partial_{p_j} \chi(p_1, p_2) \right|_{p_1=\bar{p}_1, p_2=\bar{p}_2}, \quad (34)$$

where we introduced the notation with subscript  $j$  to refer to the momentum derivative  $\chi_j = \frac{\partial \chi}{\partial p_j}$  of the scattering phase shift  $\chi$ .

Equation (33) assumes that all scatterings occur without particle production, which is the case for the integrable model we are dealing with.

##### A. Displacements from Bethe ansatz

An analytic expression for the displacement as a function of anisotropy and incoming momenta can be extracted from the Bethe ansatz scattering phase. The phase shift of two bound magnons of arbitrary length is obtained from the scattering kernel  $\Theta_{nm}$  of the Bethe-Gaudin-Takahashi equations (8), which consists of a sum over the functions  $\theta_s$ ,  $s = |n - m|, \dots, n + m$ , defined in Table I [see also Eq. (9)].

For the scattering of an  $n$ -string wave packet labeled by 1 with an  $m$ -string wave packet labeled by 2, the displacements on the trajectories of the  $n$ - and  $m$ -string wave packets ( $j = 1, 2$ , respectively) are given as a function of momenta as

$$\chi_j^{(n,m)}(\bar{p}_1, \bar{p}_2) = \left. \frac{\partial \Theta_{nm}[\lambda^{(n)}(p_1) - \lambda^{(m)}(p_2)]}{\partial p_j} \right|_{p_1=\bar{p}_1, p_2=\bar{p}_2} \quad (35)$$

The  $n$ - and  $m$ -strings with centers  $\lambda^{(n)}$  and  $\lambda^{(m)}$  carry momenta  $\bar{p}_1$  and  $\bar{p}_2$ , respectively. The wave packets are located such that  $\bar{x}_1 \ll \bar{x}_2$  and  $v_1 > v_2$ .

We first discuss the planar case  $|\Delta| = |\cos(\zeta)| < 1$ . By inverting Eq. (12), we express the string center of an  $n$ -string in terms of its momentum as

$$\lambda^{(n)}(p) = \operatorname{atanh} \left( \tan \frac{n\zeta}{2} \tan \frac{\pi - p}{2} \right). \quad (36)$$

Due to Eq. (9), expression (35) for the displacement consists of a sum of the momentum derivative of the functions  $\theta_s$  of

which the individual terms are computed as

$$\begin{aligned} & \frac{\partial \theta_s[\lambda^{(n)}(p_1) - \lambda^{(m)}(p_2)]}{\partial p_1} \\ &= \frac{\partial \theta_s(\lambda^{(n)} - \lambda^{(m)})}{\partial \lambda^{(n)}} \frac{\partial \lambda^{(n)}(p_1)}{\partial p_1} \\ &= \frac{\sin(s\zeta)}{\cos(s\zeta) - \text{ch}(2\lambda_1^{(n)} - 2\lambda_2^{(m)})} \frac{\sin(n\zeta)}{\cos(n\zeta) - \cos(p_1)}. \end{aligned} \quad (37)$$

For the scattering phase shift of two 1-string wave packets with  $\bar{p}_1 = -\bar{p}_2 = -\pi/2$ , the displacement is given as a function of anisotropy as

$$\begin{aligned} \chi_1^{(1,1)}\left(-\frac{\pi}{2}, \frac{\pi}{2}\right) &= \frac{\sin(2\zeta) \tan(\zeta)}{\cos(2\zeta) - \text{ch}[4 \text{atanh}(\tan \frac{\zeta}{2})]} \\ &= \frac{1}{1 + \Delta^2} - 1. \end{aligned} \quad (38)$$

The latter result could have been also obtained directly by taking the derivative of Eq. (6).

Similarly, the scattering displacement of two 2-string wave packets becomes

$$\begin{aligned} \chi_1^{(2,2)}\left(-\frac{\pi}{2}, \frac{\pi}{2}\right) &= \frac{2 \sin(2\zeta) \tan(2\zeta)}{\cos(2\zeta) - \text{ch}[4 \text{atanh}(\tan \zeta)]} \\ &+ \frac{\sin(4\zeta) \tan(2\zeta)}{\cos(4\zeta) - \text{ch}[4 \text{atanh}(\tan \zeta)]} \\ &= \frac{16\Delta^6 - 4\Delta^4 + 5}{(4\Delta^4 + 1)[1 + (2\Delta^2 - 1)^2]} - 3. \end{aligned} \quad (39)$$

The validity of the latter equation only extends to the region where  $\Delta > 1/\sqrt{2}$ , as 2-strings with momentum  $p = \pm\pi/2$  do not exist for lower anisotropy [16,45], which can be shown from the anisotropy-dependent maximum string quantum numbers. Negative parity 2-strings do not exist for  $0 < \Delta < 1$ , therefore, these states are not suitable for the construction of 2-bound magnons with  $p = \pm\pi/2$  below  $\Delta = 1/\sqrt{2}$ , implying that Eq. (39) has no physical meaning for  $\Delta < 1/\sqrt{2}$ .

For the regime  $\Delta > 1$ , Eqs. (38) and (39) hold as well since the  $\theta_s(\lambda)$  for both regimes are just rotated in the complex rapidity plane with respect to each other. Starting from  $\theta_s(\lambda)$  for  $\Delta > 1$  with  $\zeta = \text{acosh}(\Delta)$  therefore yields identical results for the scattering displacements.

The displacements for the scattering of a 1-string wave packet at a 3-string wave packet is given by

$$\chi_1^{(1,3)}\left(-\frac{\pi}{2}, \frac{\pi}{2}\right) = -\frac{(4\Delta^2 - 1)^2(4\Delta^2 - 3)}{2(4\Delta^2 + 1)(4\Delta^4 - 3\Delta^2 + 1)}, \quad (40)$$

$$\chi_2^{(1,3)}\left(-\frac{\pi}{2}, \frac{\pi}{2}\right) = \frac{(4\Delta^2 - 1)^3}{2(4\Delta^2 + 1)(4\Delta^4 - 3\Delta^2 + 1)}, \quad (41)$$

$$\chi_1^{(1,3)}\left(-\frac{\pi}{2}, \pi\right) = -\frac{2\Delta(2\Delta + 1)^3(2\Delta^2 + \Delta - 1)}{(2\Delta^2 + 2\Delta + 1)(8\Delta^4 + 8\Delta^3 + 1)}, \quad (42)$$

$$\chi_2^{(1,3)}\left(-\frac{\pi}{2}, \pi\right) = \frac{2\Delta^2(2\Delta + 1)^4}{(2\Delta^2 + 2\Delta + 1)(8\Delta^4 + 8\Delta^3 + 1)}. \quad (43)$$

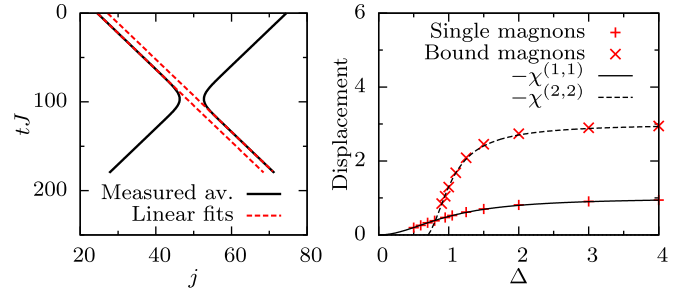


FIG. 4. (Color online) Left: measurement of the scattering displacement from Bethe ansatz time evolution of bound magnons at  $\Delta = 2$ , by computing the average location of the wave packets according to Eq. (44) and taking the horizontal difference of the linear fits. Right: scattering displacement (in units of lattice distance) for single and bound magnons as function of anisotropy. Measured data from algebraic Bethe ansatz time evolution of magnetization (see left panel) compared to the derivative of scattering phase shifts [see Eqs. (38) and (39)].

### B. Comparison of scattering theory and time evolution

The displacement in the trajectories induced by scattering effects is easily deduced from the time-evolution data of Fig. 3. For symmetric cases with identical particles, the average position of the magnetization of a single wave packet can be computed on one-half of the system as a function of time:

$$\begin{aligned} \langle j \rangle_{\text{av}}^{\text{left}}(t) &= \frac{\sum_{j=1}^{N/2} j \left(\frac{1}{2} - \langle S_j^z(t) \rangle\right)}{\sum_{j=1}^{N/2} \left(\frac{1}{2} - \langle S_j^z(t) \rangle\right)} \\ &= \frac{2}{M} \sum_{j=1}^{N/2} j \left(\frac{1}{2} - \langle S_j^z(t) \rangle\right). \end{aligned} \quad (44)$$

The result for the scattering between two 2-string wave packets is plotted in Fig. 4. Note that the plotted average location of the wave packet in Fig. 4 by means of Eq. (44) does not resemble the actual trajectories when the wave packets spatially overlap with each other, as the trajectories are not properly defined during the scattering event. A linear fit with the same slope is applied to the propagation of the average position of the wave packet before and after scattering. The horizontal difference between the two straight lines is the displacement of the wave packet due to scattering effects. The procedure of measuring the displacements by means of Eq. (44) was performed for multiple values of anisotropy  $\Delta$ . Moreover, these results can be compared with Eq. (35), where the displacements for the situations of Fig. 4 are specifically given by Eqs. (38) and (39) as function of anisotropy. The results are plotted in Fig. 4 as well, showing agreement between both approaches. The explicit time evolution relying on algebraic Bethe ansatz matrix elements provides confirmation of the analytical predictions for the displacements.

Aside from symmetric scattering situations, colliding distinct  $n$ -string and  $m$ -string wave packets can be constructed and traced in the time-evolved magnetization profile. Figure 5 shows the scattering between a 1- and a 3-string wave packet. Two situations are distinguished, the former with both wave packets at maximal velocity at  $\bar{p}_1 = -\bar{p}_2 = -\pi/2$ , where the larger string moves much slower because of its effective mass



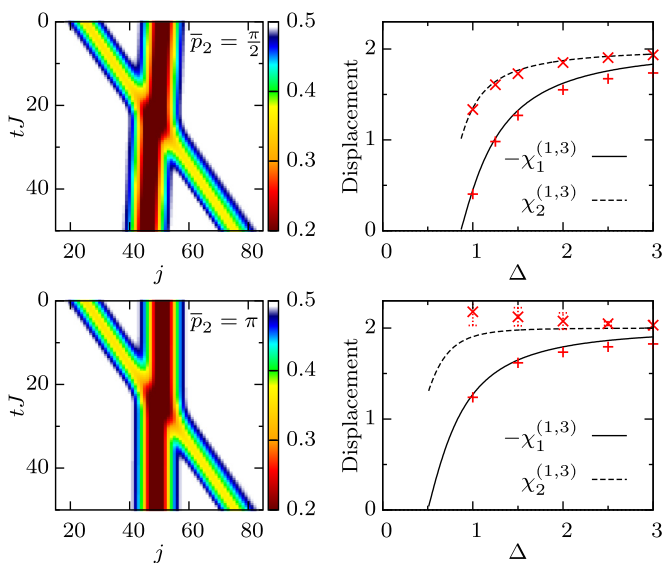


FIG. 5. (Color online) Left: time evolution from algebraic Bethe ansatz of  $\langle S_j^z(t) \rangle$  for a single magnon wave packet with momentum  $\bar{p}_1 = -\pi/2$  scattering against a 3-string wave packet with momentum  $\bar{p}_2 = \pi/2$  (top) and  $\bar{p}_2 = \pi$  (bottom), respectively, with  $N = 100$ ,  $\Delta = 2$ , and  $\alpha = 4$ . Right: corresponding scattering displacements (in units of lattice distance) as function of anisotropy [see Eqs. (40)–(43)], where the points are measured displacements obtained from the time-evolution data.

[see Eq. (25)]. The latter situation consists of an incoming 1-string wave packet scattering on a stationary wall of a 3-string wave packet at  $\bar{p}_2 = \pi$ . The corresponding analytic scattering displacements (40)–(43) are shown adjacent to the time evolution plots in Fig. 5. The scattering displacements are measured from the time evolution by imposing a Gaussian fit on the wave packet after scattering and comparing the average location to the time evolution of a single wave packet without scattering. In the lower right panel ( $\bar{p}_2 = \pi$ ), the fitting procedure of the average location of the 3-string wave packet becomes less accurate for decreasing  $\Delta$ .

In the planar regime where  $|\Delta| < 1$ , we encounter substantial limitations (as described in Sec. III B) on both the construction of the scattering wave packets, as well as on the comparison to results of scattering theory. Due to the effective binding length of the individual constituents of the string states, the tails of the magnetization profile of the wave packets start overlapping with each other significantly at low  $\Delta$ , invalidating important assumptions of scattering theory which include asymptotic separation of the wave packets before and after scattering. Comparison of the measured displacements to scattering theory is therefore not meaningful for higher strings in the planar regime. Only going to much larger system sizes would resolve the aforementioned issue.

### C. Displacements from TEBD calculations for scattering of spin blocks compared to the Ising limit

The scattering displacement turns out to have a particularly simple form at large anisotropy. In particular, it was found in Ref. [19] that when a propagating  $n$ -particle cluster is incident on a larger block, the block is displaced by  $2n$  sites. This

can be explained from the Bethe ansatz results presented in previous sections by taking the Ising limit  $\Delta \rightarrow \infty$  of Eq. (35) for the displacement of an  $n$ -string wave packet scattering at an  $m$ -string wave packet.

First, we obtain for all  $s$

$$\lim_{\Delta \rightarrow \infty} \frac{\partial \theta_s[\lambda^{(n)}(p_1) - \lambda^{(m)}(p_2)]}{\partial p_1} = -1, \quad (45)$$

which is independent of  $n$ ,  $m$ ,  $p_1$ , and  $p_2$ . Using Eq. (9) for the phase shift between an  $n$ -string and an  $m$ -string eventually yields

$$\lim_{\Delta \rightarrow \infty} \chi_1^{(n,m)}(\bar{p}_1, \bar{p}_2) = -2 \min(n, m) + \delta_{nm}. \quad (46)$$

Thus, the scattering displacement for unequal wave packets ( $n \neq m$ ) is equal to twice the number of particles in the smaller wave packet.

The leading-order term of the Ising limit in Eq. (46) can be given for the case where  $\cos(\bar{p}_1 - \bar{p}_2) \neq 0$  as

$$\begin{aligned} \chi_{1, \text{LO}}^{(n,m)} = & -\delta_{nm} \left( (2 - \delta_{n1}) \frac{\cos(\bar{p}_1 - \bar{p}_2)}{2} - \frac{\delta_{n1}}{2} \right) \Delta^{-2} \\ & - (1 - \delta_{nm}) \frac{\cos(\bar{p}_1 - \bar{p}_2)}{2^{|n-m|-1}} \Delta^{-|n-m|} \\ & - [2 \min(n, m) - \delta_{nm}] \frac{\cos(\bar{p}_1)}{2^{n-1}} \Delta^{-n}, \end{aligned} \quad (47)$$

yielding an error estimate for Eq. (46). A systematic expansion for all momenta becomes cumbersome due to the summation in Eq. (9) and is left out of consideration. If  $\cos(\bar{p}_1 - \bar{p}_2) = 0$ , the leading contribution is given by the third line of (47). If further  $\cos(\bar{p}_1) = 0$ , the leading-order terms will be formed by higher powers like  $\Delta^{-2n}$  for  $n = m$  or  $\Delta^{-2|n-m|}$  for  $m \neq n$ .

Figure 6 shows TEBD results of the scattering of a two-spin block excitation with a block consisting of 10 adjacent spins at  $\Delta = 5.0$ . The initial 2-spin block was created by upturning two neighboring spins at lattice sites 2 and 3. The first site (with open boundary conditions) is energetically inaccessible for large  $\Delta$ ; hence, the 2-spin block travels to the right and is incident on the 10-spin block. The displacement is clearly by 4 sites, as predicted by Eq. (46). A similar displacement by 2 sites in the case of a single incident particle was highlighted in Ref. [19].

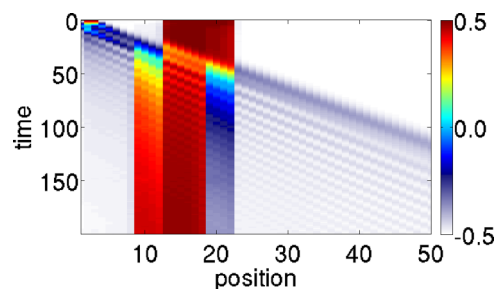


FIG. 6. (Color online) TEBD time evolution of scattering of a two-spin block state with a block of 10 upturned spins at  $\Delta = 5$ . The block of 10 upturned spins is shifted by four lattice sites upon impact of the 2-string-like bound magnon. This is in correspondence with Eq. (46), yielding a shift of four caused by a 2-string on a larger string.

Although the 2-spin block and the 10-spin block are not explicitly prepared as wave packets in this case, at large  $\Delta$ , string states are tightly bound, and therefore these blocks may be understood intuitively to be close to 2-string wave packets and 10-string wave packets. The Ising limit Eq. (46) thus provides a satisfactory explanation to the shift observed in these numerical experiments.

Even more, it was observed [19] that the behavior of the scattering displacement of a large spin-block state close to the isotropic point at  $\Delta = 1.1$  still resembles the scattering behavior of the large- $\Delta$  limit by shifting the spin block by two lattice sites upon scattering. In order to explain this from Bethe ansatz, we take the limit of Eq. (35) for the scattering of a large string ( $m \gg 1$ ) with center  $\lambda^{(m)}(p_2)$  and a 1-string with center  $\lambda^{(1)}(p_1)$  at all values of  $\Delta > 1$ ,

$$\left. \frac{\partial \theta_s(\lambda^{(1)}(p_1) - \lambda^{(m)}(p_2))}{\partial p_2} \right|_{m \gg 1} = (1 + \mathcal{O}(e^{-s\zeta}))(1 + \mathcal{O}(e^{-m\zeta})), \quad (48)$$

where  $s$  can only take on the values  $s = m - 1$  or  $m + 1$ , due to Eq. (9). The latter equation finally gives for the displacement of the large  $m$  string at  $\Delta > 1$ ,

$$\chi_2^{(1,m)}(\bar{p}_1, \bar{p}_2) \Big|_{m \gg 1} = 2 + \mathcal{O}(e^{-(m-1)\zeta}), \quad (49)$$

implying that already at  $\Delta = 1.1$  ( $\zeta = 0.4436$ ), the scattering displacement of a large spin block should still be close to two sites, as is in agreement with the aforementioned observation.

## V. CONCLUSIONS

In this work, we have studied the quantum analog of solitonlike scattering phenomena in the anisotropic spin- $\frac{1}{2}$  Heisenberg chain by utilizing the algebraic Bethe ansatz. We considered quantum scattering of localized excitations, created from linear combinations of Bethe states with Gaussian-distributed momenta, constructing wave packets of  $n$  bound magnons. This construction allows to study scattering phenomena of wave packets containing an arbitrary number of bound magnons.

Exact methods based on the algebraic Bethe ansatz provide a framework to evaluate the time-dependent expectation value of the local magnetization profile, which allows for a spatial tracking of the localized excitations. This explicit unitary time evolution of the initial state relies on the availability of determinant expressions for matrix elements of local spin operators.

The algebraic Bethe ansatz time evolution of colliding wave packets of bound magnons displays a spatial displacement in the trajectories of the wave packets under scattering, consistent with scattering theory results. For different values of anisotropy, fits on the displacements of the time-evolved trajectories are in agreement with analytical results on the displacement from the derivative of the Bethe ansatz scattering phase shifts, for several combinations of string lengths.

The scattering phase shift can also be measured directly as well for the scattering between two localized single-magnon wave packets, again matching phase shift expressions provided by Bethe ansatz. Using TEBD, scattering displacements from spin-block states have been studied, showing similar scattering

features and validating the analytic predictions of the Ising limit for the scattering displacement.

The experimental realizability of real-time tracking of localized excitations in the Heisenberg spin chain [17,22] might provide an opportunity to study dynamical scattering phenomena of (bound) magnons. A possible manifestation of such phenomena might be provided by the solitonlike scattering effects analyzed in this work.

The results on the scattering displacements can be extended to other Bethe ansatz solvable models. Finally, the time-evolution method relying on matrix element expressions from algebraic Bethe ansatz can be used to construct other initial states in spin chains as well and to study their respective relaxation phenomena.

## ACKNOWLEDGMENTS

We would like to thank I. Bloch, F. Essler, and G. Mussardo for useful discussions. R.V., D.F., M.B., and J.-S. C. acknowledge support from the Foundation for Fundamental Research on Matter (FOM) and from the Netherlands Organization for Scientific Research (NWO). M.G. and H.G.E. acknowledge support from the FWF, SFB ViCoM F4104. M.G. acknowledges support by the Simons Foundation (Many Electron Collaboration). This research was supported in part by Perimeter Institute for Theoretical Physics. Research at Perimeter Institute is supported by the Government of Canada through Industry Canada and by the Province of Ontario through the Ministry of Economic Development & Innovation. The authors would furthermore like to thank the MPI-PKS for hospitality during the workshop ‘‘Quantum systems out of equilibrium’’ and the CRM for their hospitality during the ‘‘Beyond Integrability’’ workshop.

## APPENDIX A: GENERAL RESULTS FROM SCATTERING THEORY

In this appendix, we review some general results from quantum scattering theory, emphasizing the direct connection between physically observable quantities and (derivatives of) the scattering phase shift [52,53]. We consider an initial state with two well-separated quasiparticles (e.g., magnons and magnon bound states) with almost well-defined positions  $(\bar{x}_1, \bar{x}_2)$  and momenta  $(\bar{p}_1, \bar{p}_2)$ . In the asymptotic region, i.e., when the distance between the two wave packets is much larger than the radius of the interaction, the time evolution is free. Hence, the centers of the wave packets  $x_j(t) = \langle \hat{x}_j(t) \rangle$  translate rigidly. The scattering between the two particles, however, introduces a displacement proportional to the derivative of the scattering phase  $\chi(p_1, p_2)$ . More precisely, in the asymptotic regions, the motion of the center of each wave packet is

$$x_j(t) = \begin{cases} \bar{x}_j + v_j t & \text{before scattering,} \\ \bar{x}_j + v_j t - \chi_j(\bar{p}_1, \bar{p}_2) & \text{after scattering,} \end{cases} \quad (A1)$$

where  $\chi_j = \frac{\partial \chi}{\partial p_j}$  is the displacement, while the group velocity  $v_j$  is given by the derivative of the dispersion relation, i.e.,  $v_j = \frac{\partial E_j}{\partial p_j} \Big|_{p_j = \bar{p}_j}$ .

Similarly, the scattering has an effect on the width of each wave packet  $\Delta x_j^2(t) = \langle [\hat{x}_j(t) - x_j(t)]^2 \rangle$ . For Gaussian wave

packets we have to first order

$$\Delta x_1^2(t) = \begin{cases} \frac{\alpha_1^2}{4} + \frac{t^2 \delta^2}{\alpha_1^2} & \text{before scattering,} \\ \frac{\alpha_1^2}{4} + \frac{\chi_{12}^2}{\alpha_1^2} + \frac{(\chi_{11}-t\delta_1)^2}{\alpha_1^2} & \text{after scattering,} \end{cases} \quad (\text{A2})$$

where  $\alpha_j = \sqrt{\Delta x_j^2(t)|_{t=0}}$ , while  $\delta_j = \frac{\partial E_j^2}{\partial p_j^2}|_{p_j=\bar{p}_j}$  and  $\chi_{ij} = \frac{\partial^2 \chi}{\partial p_i \partial p_j}|_{p_i=\bar{p}_i, p_j=\bar{p}_j}$ . An analogous formula holds for  $\Delta x_2^2(t)$  as well.

Scattering also builds up correlations between the (initially uncorrelated) Gaussian wave packets, as can be seen from the time evolution of the correlator  $\Delta x_1 \Delta x_2(t) = \langle [\hat{x}_1(t) - x_1(t)] [\hat{x}_2(t) - x_2(t)] \rangle$ ,

$$\Delta x_1 \Delta x_2(t) = \begin{cases} 0 & \text{before scattering,} \\ \chi_{12} \left[ \frac{\chi_{11}-t\delta_1}{\alpha_1^2} + \frac{\chi_{22}-t\delta_2}{\alpha_2^2} \right] & \text{after scattering.} \end{cases} \quad (\text{A3})$$

All the aforementioned quantities carry information about the derivatives of the scattering phase and can be in principle measured in a scattering experiment. These results hold for any one-dimensional theory with stable particles. For the XXZ spin chain, the stability of magnon bound states above the binding-energy threshold is preserved by the integrability of the theory.

## APPENDIX B: SCATTERING OF TWO PARTICLES IN ONE DIMENSION

In this appendix, we review some general results for the scattering of two particles (magnons, magnon bound states, etc.) [52,53] and derive Eqs. (A1)–(A3). For simplicity, we consider the scattering of two distinguishable particles in a continuum integrable model. The same results can be obtained for identical particles.

So, let us consider two particles with asymptotic momenta  $p_1$  and  $p_2$  and different dispersion relations  $E_i(p_i)$ ,  $i = 1, 2$ , in an infinite volume (zero density). The statement of the coordinate Bethe ansatz [see Eq. (2)] is that in the asymptotic region where the two particles are very far apart the eigenfunctions of the system are plane waves,

$$\varphi_{p_1, p_2}(x_1, x_2) = \begin{cases} e^{i(p_1 x_1 + p_2 x_2)}, & x_1 \ll x_2 \\ S(p_1, p_2) e^{i(p_1 x_1 + p_2 x_2)}, & x_1 \gg x_2 \end{cases} \quad (\text{B1})$$

where  $S(p_1, p_2) = -e^{i\chi(p_1, p_2)}$  is the scattering matrix and  $\chi(p_1, p_2)$  the scattering phase shift. At zero density, the energy is simply

$$E(p_1, p_2) = E_1(p_1) + E_2(p_2). \quad (\text{B2})$$

Let us briefly comment on the structure of the wave function (B1). First of all, as we discussed in the main text for the XXZ model, bound states are characterized by complex-conjugate rapidities, which leads to exponentially decaying terms in the Bethe wave function (2) with respect to the relative coordinate. This is a feature of bound states that are characterized by a center-of-mass coordinate. In what follows, we do not denote these exponentially decaying terms and label the bound states only with the position of the center of mass. For elementary particles, Eq. (B1) is a consequence of the conservation of energy and momentum in one dimension, and as such it is valid

for any model with a sufficiently short-range potential. Instead, if one of these particles is not elementary but it is a bound state, then for a general theory the previous simple form of the wave function is not true anymore. The bound state can decay and scattering be diffractive. However, there exist models (such as the XXZ spin chain) for which the scattering is always nondiffractive. Hence, the coordinate Bethe ansatz describes a complete set of asymptotic eigenfunctions, as thoughtfully discussed in Sutherland's book [45]. For such theories, bound states cannot decay, but are protected by integrability.

Let us consider the scattering problem. At time  $t = 0$  the two particles are far apart and have (almost) well-defined positions  $\bar{x}_j$  and momenta  $\bar{p}_j$ ,  $j = 1, 2$ . Without loss of generality, we may assume that  $\bar{x}_1 \ll \bar{x}_2$  and  $v_1 > v_2$ , where  $v_j$  is the group velocity

$$v_j = \frac{\partial E_j}{\partial p_j} \Big|_{p_j=\bar{p}_j}. \quad (\text{B3})$$

When they are far apart, the two wave packets move with velocities  $v_j$ . If  $v_1 < v_2$ , the evolution is always free, while for  $v_1 > v_2$  at some time the two particles become close and the interaction plays a role.

The time evolution of a two-body wave function is given by

$$\psi(x_1, x_2, t) = \int \frac{dp_1}{2\pi} \frac{dp_2}{2\pi} [C(p_1, p_2) \times e^{-it[E_1(p_1)+E_2(p_2)]} \varphi_{p_1, p_2}(x_1, x_2)], \quad (\text{B4})$$

where

$$C(p_1, p_2) = \int dx_1 dx_2 \varphi_{p_1, p_2}^*(x_1, x_2) \psi(x_1, x_2), \quad (\text{B5})$$

$\varphi_{p_1, p_2}$  is a complete set of eigenfunctions, and  $\psi(x_1, x_2)$  is the initial wave function. Now, we consider an initial state which is factorized

$$\psi(x_1, x_2) = \psi_1(x_1) \psi_2(x_2), \quad (\text{B6})$$

where

$$\psi_j(x_j) = \int \frac{dp_j}{2\pi} \hat{\psi}_j(p_j) e^{ip_j x_j}, \quad j = 1, 2. \quad (\text{B7})$$

Since we are interested in computing also the spreading in time of the wave packet, we assume that the functions  $\psi_j(x_j)$  are Gaussian wave packets with minimal indetermination

$$\psi_j(x_j) = \left( \frac{2}{\pi \alpha_j^2} \right)^{\frac{1}{4}} e^{i\bar{p}_j x_j} e^{-\frac{(x_j - \bar{x}_j)^2}{\alpha_j^2}}, \quad (\text{B8})$$

where  $\Delta x_j^2 = \int dx_j (x_j - \bar{x}_j)^2 |\psi_j(x_j)|^2 = \alpha_j^2/4$ . This assumption may be dropped if we are interested only in the displacement, Eq. (A1).

Up to now, everything is exact. However, we can make the following approximations:

(i) Since the initial state  $\psi(x_1, x_2)$  is sharply peaked around  $\bar{x}_1$  and  $\bar{x}_2$  with  $\bar{x}_1 \ll \bar{x}_2$ , the only relevant contributions to (B5) come from the regions around these two points. We can then use the asymptotic formula (B1) for  $\varphi_{p_1, p_2}(x_1, x_2)$  with  $x_1 \ll x_2$ . Inserting Eq. (B1) into (B5), and using definition

(B7) yields

$$C(p_1, p_2) \approx \hat{\psi}_1(p_1)\hat{\psi}_2(p_2). \quad (\text{B9})$$

(ii) Since the functions  $\hat{\psi}_j(p_j)$ ,  $j = 1, 2$ , in (B9) are peaked around  $p_j \approx \bar{p}_j$ , we can expand the dispersion relations  $E_j(p_j)$  around these momenta in the integrand of Eq. (B4). Moreover, for  $x_1 \gg x_2$  we may substitute the asymptotic expression (B1) for  $\varphi_{p_1, p_2}$  into (B4) and similarly expand the scattering phase shift  $\chi(p_1, p_2)$ . Up to second order, these expansions read as

$$E_j(p_j) = E_j(\bar{p}_j) + v_j(p_j - \bar{p}_j) + \frac{\delta_j}{2}(p_j - \bar{p}_j)^2$$

$$\text{with} \quad \delta_j = \left. \frac{\partial^2 E_j}{\partial p_j^2} \right|_{p_j = \bar{p}_j}, \quad \text{and} \quad (\text{B10})$$

$$\begin{aligned} \chi(p_1, p_2) &= \chi(\bar{p}_1, \bar{p}_2) + \chi_i(\bar{p}_1, \bar{p}_2)(p_i - \bar{p}_i) \\ &\quad + \frac{1}{2}(p_i - \bar{p}_i)\chi_{ij}(\bar{p}_1, \bar{p}_2)(p_j - \bar{p}_j) \end{aligned} \quad (\text{B11})$$

with  $\chi_i = \frac{\partial \chi}{\partial p_i}$  and  $\chi_{ij} = \frac{\partial^2 \chi}{\partial p_i \partial p_j}$ , and we sum over repeated indices. These expansions up to the second order are physically meaningful only if we can ignore the distortion of the wave packet, and so they are no more valid for times long enough.

Taking advantage of these approximations, we are now in the position to derive Eqs. (A1)–(A3). Before scattering, the two wave packets propagate freely. Since they start around  $\bar{x}_1$  and  $\bar{x}_2$  with  $\bar{x}_1 \ll \bar{x}_2$ , they are centered around  $x_j(t)$  with  $x_1(t) \ll x_2(t)$  for small times. Thus, we can use the asymptotic formula of  $\varphi_{p_1, p_2}(x_1, x_2)$  valid for  $x_1 \ll x_2$  in Eq. (B1), and hence perform the Gaussian integrations, thus obtaining the prescattering results (A1)–(A3). Similarly, long after the scattering, we have  $x_1(t) \gg x_2(t)$ . Thus, taking advantage of the proper asymptotic formula (B1) for the eigenfunctions and the expansion (B11) of the scattering phase shift, we also obtain the post-scattering formulas (A1)–(A3).

### APPENDIX C: OBTAINING THE PHASE SHIFT FROM THE PHASE OF THE WAVE FUNCTION OF THE FULL CHAIN

A prominent theme of this work is that real-time scattering between two localized wave packets is well described by the phase shift corresponding to the average momenta of the two wave packets. In this appendix, we connect real-time scattering data for two single-magnon (1-string) wave packets in a finite chain directly to the definition of the scattering phase shift, namely, that the scattering phase shift is the phase picked up by the system wave function during the scattering process. To demonstrate the robustness of this idea, we show results from a stringent situation of rather small wave packets (width of a few sites) in a rather small chain ( $\approx 25$  sites), far from the usual idealized limit of infinitely extended excitations.

Here, the Hamiltonian of the XXZ model is used in the following form:

$$H_\Delta = J \sum_{j=1}^{L-1} \left[ S_j^x S_{j+1}^x + S_j^y S_{j+1}^y + \Delta \left( S_j^z - \frac{1}{2} \right) \left( S_{j+1}^z - \frac{1}{2} \right) \right]. \quad (\text{C1})$$

The extra terms compared to Eq. (1) are convenient for considering the phase of the time-evolving wave function in the two-magnon sector. When evolving with the Hamiltonian (1), there is a constant accumulation of  $\Delta$ -dependent phase in the time evolution even when the magnons are spatially separated; this is avoided with the above form. With this form, the interaction affects the phase of the chain wave function only when the magnons meet each other.

In the initial state, each magnon wave packet is prepared as a Gaussian, localized approximately around  $L/4$  and  $3L/4$ , respectively, with opposite momenta  $\pm k$ . The initial state is thus

$$\begin{aligned} |\psi(0)\rangle &= \mathcal{N}_0 \sum_x S_x^- \exp\left[-\frac{(x-x_0)^2}{\alpha^2}\right] e^{-ikx} \\ &\quad \times \sum_y S_y^- \exp\left[-\frac{(y-y_0)^2}{\alpha^2}\right] e^{+iky} \quad |\uparrow\uparrow \dots \uparrow\rangle \end{aligned} \quad (\text{C2})$$

with  $x_0$  and  $y_0$  near the center of the left half and right half of the chain. Here,  $x$  and  $y$  are used as discrete site indices, and  $\mathcal{N}_0$  is a normalization constant. The definition of the width  $\alpha$  is chosen to be consistent with  $\alpha$  in the main text. To avoid excessive dispersion, we use  $k$  near  $\pi/2$ . This preparation ensures that the two wave packets will move toward each other, collide, and continue on after the scattering, as shown in the left panel of Fig. 7. The effect of the interaction  $J\Delta$  should be felt only when the particles are crossing each other. This interaction gives a phase shift to the wave function during the scattering.

The wave function at time  $t$  is

$$|\psi^{[\Delta]}(t)\rangle = e^{-iH_\Delta t} |\psi^{[\Delta]}(0)\rangle = e^{-iH_\Delta t} |\psi(0)\rangle \quad (\text{C3})$$

(same initial state for every  $\Delta$ ). We consider the overlap

$$\Gamma_\Delta(T) = \langle \psi^{[0]}(T) | \psi^{[\Delta]}(T) \rangle \quad (\text{C4})$$

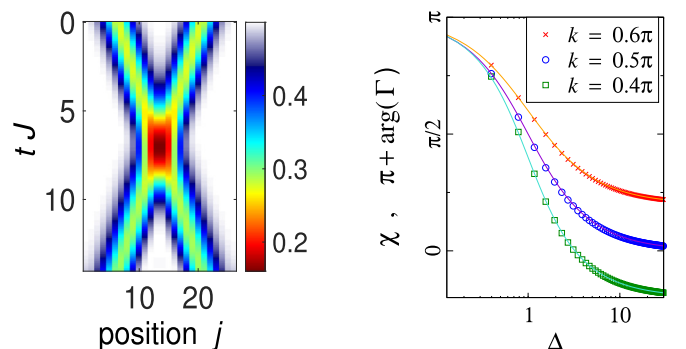


FIG. 7. (Color online) Left: time evolution of  $\langle S_j^z(t) \rangle$ , performed using numerical exact diagonalization for  $L = 26$  sites. Two single-magnon wave packets are prepared with initial width  $\alpha = 5/\sqrt{2} \approx 3.5355$  and opposite momenta  $\pm k$ ; here  $k = 0.5\pi$  and  $\Delta = 2.5$ . Right: the Bethe ansatz phase shift (lines) are compared with the phase of  $\Gamma$  (symbols, shifted by  $\pi$ ), obtained from the wave function of the time-evolved  $L = 26$  chain. The comparison is shown for three  $k$  values.

at some appropriately chosen “final” time  $t = T$ . Evolution with the  $\Delta = 0$  (noninteracting) Hamiltonian gives a “reference” state. We are interested in the phase accumulated in the evolution with the  $\Delta \neq 0$  Hamiltonian in comparison with the reference state, namely, the phase of  $\Gamma_\Delta$ . The final time  $T$  is chosen such that the particles have completed their scattering, but have not reached the boundaries of the chain. So, there are no edge effects. For example, in the process shown in Fig. 7 (left), it would be reasonable to compare overlaps at  $T \sim 13J^{-1}$ .

The phase of  $\Gamma_\Delta$  should approximate the scattering phase shift

$$\lim_{L \rightarrow \infty, \alpha \rightarrow \infty} \arg(\Gamma_\Delta) = \chi - \pi. \quad (\text{C5})$$

The shift  $\pi$  is in accordance with the convention used in this paper, e.g., in Eq. (6). For  $k = k_2 = -k_1$ , the Bethe ansatz phase shift is obtained from Eq. (6) to be

$$\chi = \pi - 2 \operatorname{atan}\left(\frac{\Delta \sin(k)}{1 - \Delta \cos(k)}\right). \quad (\text{C6})$$

Figure 7 (right) compares the phases obtained from the time-evolving wave function of a finite chain containing two relatively narrow wave packets, with the Bethe ansatz phase shift expressions which are strictly valid for delocalized excitations. Even with wave packets as narrow as  $\alpha \approx 3.5$ , the Bethe ansatz expressions match extremely well the phase acquired in real-time evolution.

- 
- [1] E. Fermi, J. Pasta, and S. Ulam, Los Alamos Scientific Laboratory Report No. LA-1940, 1955 (unpublished). Focus Issue: The “Fermi-Pasta-Ulam” Problem-The First 50 Years, *Chaos* **15**, (2005); G. Gallavotti, *The Fermi-Pasta-Ulam Problem: A Status Report* (Springer, Berlin, 2008).
- [2] N. J. Zabusky and M. D. Kruskal, *Phys. Rev. Lett.* **15**, 240 (1965).
- [3] D. J. Korteweg and H. de Vries, *Philos. Mag.* **39**, 422 (1895); A. C. Scott, *The Nonlinear Universe* (Springer, Berlin, 2007).
- [4] C. S. Gardner, J. M. Greene, M. D. Kruskal, and R. M. Miura, *Phys. Rev. Lett.* **19**, 1095 (1967).
- [5] L. D. Faddeev and L. A. Takhtajan, *Hamiltonian Methods in the Theory of Solitons* (Nauka, Moscow, 1986).
- [6] V. E. Korepin, N. M. Bogoliubov, and A. G. Izergin, *Quantum Inverse Scattering Method and Correlation Functions* (Cambridge University Press, Cambridge, UK, 1993).
- [7] J.-S. Caux and J. Mossel, *J. Stat. Mech.: Theory Exper.* (2011) P02023.
- [8] H. Bethe, *Z. Phys.* **71**, 205 (1931).
- [9] E. H. Lieb and W. Liniger, *Phys. Rev.* **130**, 1605 (1963).
- [10] E. H. Lieb, *Phys. Rev.* **130**, 1616 (1963).
- [11] N. Fabbri, M. Panfil, D. Clément, L. Fallani, M. Inguscio, C. Fort, and J.-S. Caux, *Phys. Rev. A* **91**, 043617 (2015).
- [12] F. Meinert, M. Panfil, M. J. Mark, K. Lauber, J.-S. Caux, and H.-C. Nägerl, *Phys. Rev. Lett.* **115**, 085301 (2015).
- [13] L. D. Faddeev and L. A. Takhtajan, *Phys. Lett. A* **85**, 375 (1981).
- [14] M. Mourigal, M. Enderle, A. Klöpperpieper, J.-S. Caux, A. Stunault, and H. M. Rønnow, *Nat. Phys.* **9**, 435 (2013).
- [15] B. Lake, D. A. Tennant, J.-S. Caux, T. Barthel, U. Schollwöck, S. E. Nagler, and C. D. Frost, *Phys. Rev. Lett.* **111**, 137205 (2013).
- [16] M. Ganahl, E. Rabel, F. H. L. Essler, and H. G. Evertz, *Phys. Rev. Lett.* **108**, 077206 (2012).
- [17] T. Fukuhara, P. Schauss, M. Endres, S. Hild, M. Cheneau, I. Bloch, and C. Gross, *Nature (London)* **502**, 76 (2013).
- [18] J. Sato, R. Kanamoto, E. Kaminishi, and T. Deguchi, *Phys. Rev. Lett.* **108**, 110401 (2012).
- [19] M. Ganahl, M. Haque, and H. G. Evertz, *arXiv:1302.2667*.
- [20] A. Wöllert and A. Honecker, *Phys. Rev. B* **85**, 184433 (2012).
- [21] M. Lewenstein, A. Sanpera, V. Ahufinger, *Ultracold Atoms in Optical Lattices: Simulating Quantum Many-Body Systems* (Oxford University Press, Oxford, UK, 2012); I. Bloch, J. Dalibard, and S. Nascimbéne, *Nat. Phys.* **8**, 267 (2012); I. Bloch, J. Dalibard, W. Zwerger, *Rev. Mod. Phys.* **80**, 885 (2008); T. Kinoshita, T. Wenger, and D. S. Weiss, *Nature (London)* **440**, 900 (2006); M. Greiner, O. Mandel, T. W. Hänsch, and I. Bloch, *ibid.* **419**, 51 (2002).
- [22] T. Fukuhara, A. Kantian, M. Endres, M. Cheneau, P. Schauf, S. Hild, D. Bellem, U. Schollwöck, T. Giamarchi, C. Gross, I. Bloch, and S. Kuhr, *Nat. Phys.* **9**, 235 (2013).
- [23] P. Cappellaro, C. Ramanathan, and D. G. Cory, *Phys. Rev. A* **76**, 032317 (2007); G. A. Alvarez, D. Suter, and R. Kaiser, *Science* **349**, 846 (2015).
- [24] A. L. Cavalieri, N. Müller, T. Uphues, V. S. Yakovlev, A. Baltuška, B. Horvath, B. Schmidt, L. Blümel, R. Holzwarth, S. Hendel, M. Drescher, U. Kleineberg, P. M. Echenique, R. Kienberger, F. Krausz, and U. Heinzmann, *Nature (London)* **449**, 1029 (2007); S. Wall, D. Brida, S. R. Clark, H. P. Ehrke, D. Jaksch, A. Ardavan, S. Bonora, H. Uemura, Y. Takahashi, T. Hasegawa, H. Okamoto, G. Cerullo, and A. Cavalleri, *Nat. Phys.* **7**, 114 (2011); L. Perfetti, P. A. Loukakos, M. Lisowski, U. Bovensiepen, H. Berger, S. Biermann, P. S. Cornaglia, A. Georges, and M. Wolf, *Phys. Rev. Lett.* **97**, 067402 (2006); S. Iwai, M. Ono, A. Maeda, H. Matsuzaki, H. Kishida, H. Okamoto, and Y. Tokura, *ibid.* **91**, 057401 (2003); F. Schmitt, P. S. Kirchmann, U. Bovensiepen, R. G. Moore, L. Rettig, M. Krenz, J.-H. Chu, N. Ru, L. Perfetti, D. H. Lu, M. Wolf, I. R. Fisher, and Z.-X. Shen, *Science* **321**, 1649 (2008).
- [25] J. Eisert, M. Friesdorf, and C. Gogolin, *Nat. Phys.* **11**, 124 (2015); A. Polkovnikov, K. Sengupta, A. Silva, and M. Vengalattore, *Rev. Mod. Phys.* **83**, 863 (2011); J. Dziarmaga, *Adv. Phys.* **59**, 1063 (2010).
- [26] W. S. Bakr, A. Peng, M. E. Tai, R. Ma, J. Simon, J. I. Gillen, S. Fölling, L. Pollet, and M. Greiner, *Science* **329**, 547 (2010); J. F. Sherson, C. Weitenberg, M. Endres, M. Cheneau, I. Bloch, and S. Kuhr, *Nature (London)* **467**, 68 (2010).
- [27] K. Winkler, G. Thalhammer, F. Lang, R. Grimm, J. Hecker Denschlag, A. J. Daley, A. Kantian, H. P. Büchler, and P. Zoller, *Nature (London)* **441**, 853 (2006).
- [28] D. Petrosyan, B. Schmidt, J. R. Anglin, and M. Fleischhauer, *Phys. Rev. A* **76**, 033606 (2007); **77**, 039908 (2008); M. Valiente and D. Petrosyan, *J. Phys. B: At., Mol. Opt. Phys.* **41**, 161002 (2008); L. Jin, B. Chen, and Z. Song, *Phys. Rev. A* **79**, 032108 (2009); F. Heidrich-Meisner, S. R. Manmana, M. Rigol, A. Muramatsu, A. E. Feiguin, and E. Dagotto, *ibid.* **80**, 041603(R) (2009); R. A. Pinto, M. Haque, and S. Flach, *ibid.* **79**, 052118

- (2009); M. Valiente, D. Petrosyan, and A. Saenz, *ibid.* **81**, 011601(R) (2010); R. Khomeriki, D. O. Krimer, M. Haque, and S. Flach, *ibid.* **81**, 065601 (2010); A. Deuchert, K. Sakmann, A. I. Streltsov, O. E. Alon, and L. S. Cederbaum, *ibid.* **86**, 013618 (2012); L. F. Santos and M. I. Dykman, *New J. Phys.* **14**, 095019 (2012); M. I. Ivanchenko, R. Khomeriki, and S. Flach, *Eur. Phys. Lett.* **98**, 66002 (2012); J. P. Ronzheimer, M. Schreiber, S. Braun, S. S. Hodgman, S. Langer, I. P. McCulloch, F. Heidrich-Meisner, I. Bloch, and U. Schneider, *Phys. Rev. Lett.* **110**, 205301 (2013); L. Vidmar, S. Langer, I. P. McCulloch, U. Schneider, U. Schollwöck, and F. Heidrich-Meisner, *Phys. Rev. B* **88**, 235117 (2013).
- [29] S. Langer, F. Heidrich-Meisner, J. Gemmer, I. P. McCulloch, and U. Schollwöck, *Phys. Rev. B* **79**, 214409 (2009); M. Haque, *Phys. Rev. A* **82**, 012108 (2010); S. Jesenko and M. Žnidarič, *Phys. Rev. B* **84**, 174438 (2011); V. Alba, K. Saha, and M. Haque, *J. Stat. Mech.* (2013) P10018; C. Karrasch, J. E. Moore, and F. Heidrich-Meisner, *Phys. Rev. B* **89**, 075139 (2014); A. Sharma and M. Haque, *Phys. Rev. A* **89**, 043608 (2014); W. Liu and N. Andrei, *Phys. Rev. Lett.* **112**, 257204 (2014).
- [30] L. Xia, L. A. Zundel, J. Carrasquilla, A. Reinhard, J. M. Wilson, M. Rigol, and D. S. Weiss, *Nat. Phys.* **11**, 316 (2015).
- [31] R. V. Mishmash and L. D. Carr, *Phys. Rev. Lett.* **103**, 140403 (2009); C. P. Rubbo, I. I. Satija, W. P. Reinhardt, R. Balakrishnan, A. M. Rey, and S. R. Manmana, *Phys. Rev. A* **85**, 053617 (2012).
- [32] W. Heisenberg, *Z. Phys.* **49**, 619 (1928).
- [33] R. Orbach, *Phys. Rev.* **112**, 309 (1958).
- [34] C. Gross and I. Bloch (private communication).
- [35] A. Lyakhov and C. Bruder, *New J. Phys.* **7**, 181 (2005); R. Heule, C. Bruder, D. Burgarth, and V. M. Stojanovic, *Eur. Phys. J. D* **63**, 41 (2011).
- [36] L.-M. Duan, E. Demler, and M. D. Lukin, *Phys. Rev. Lett.* **91**, 090402 (2003).
- [37] A. Kay and D. G. Angelakis, *Europhys. Lett.* **84**, 20001 (2008).
- [38] U. Schneider, L. Hackermüller, J. P. Ronzheimer, S. Will, S. Braun, T. Best, I. Bloch, E. Demler, S. Mandt, D. Rasch, and A. Rosch, *Nat. Phys.* **8**, 213 (2012).
- [39] A. S. Sørensen, E. Altman, M. Gullans, J. V. Porto, M. D. Lukin, and E. Demler, *Phys. Rev. A* **81**, 061603(R) (2010).
- [40] N. A. Slavnov, *Theor. Math. Phys.* **79**, 502 (1989).
- [41] N. A. Slavnov, *Theor. Math. Phys.* **82**, 273 (1990).
- [42] N. Kitanine, J. M. Maillet, and V. Terras, *Nucl. Phys. B* **554**, 647 (1999).
- [43] M. Takahashi, *Thermodynamics of One-Dimensional Solvable Models* (Cambridge University Press, Cambridge, UK, 1999).
- [44] M. Takahashi and M. Suzuki, *Prog. Theor. Phys.* **48**, 2187 (1972).
- [45] B. Sutherland, *Beautiful Models* (World Scientific, Singapore, 2004).
- [46] V. E. Korepin, *Commun. Math. Phys.* **86**, 391 (1982).
- [47] M. Gaudin, B. M. McCoy, and T. T. Wu, *Phys. Rev. D* **23**, 417 (1981).
- [48] J.-S. Caux, R. Hagemans, and J. M. Maillet, *J. Stat. Mech.: Theory Exper.* (2005) P09003.
- [49] G. Vidal, *Phys. Rev. Lett.* **91**, 147902 (2003); **93**, 040502 (2004).
- [50] J. Mossel, G. Palacios, and J.-S. Caux, *J. Stat. Mech.: Theory Exper.* (2010) L09001.
- [51] J. Mossel and J.-S. Caux, *New J. Phys.* **12**, 055028 (2010).
- [52] A. Zamolodchikov and A. Zamolodchikov, *Ann. Phys. (NY)* **120**, 253 (1979).
- [53] J. Taylor, *Scattering Theory: The Quantum Theory On Nonrelativistic Collisions* (Wiley, New York, 1972).